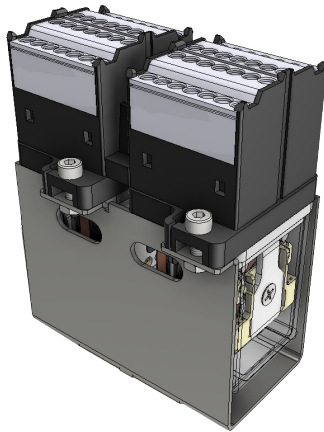


## /// Ultra compact space saving 8-pole relay module

Rugged relay module for extreme reliability, within long endurance applications and harsh environments

# D8M-U200 relay module

Part of D-platform



### Features

- Ultra compact space saving 8-pole relay module
- Easy replacement of contactors
- Module consists of 8-pole relay and socket
- All 8-pole Mors Smitt relay configurations are possible
- Back EMF suppression diode (standard in instantaneous version)
- Magnetic arc blow-out
- Sturdy spring clamp terminals
- Twin connection per relay contact
- Terminals at front side
- Surface/wall mounting standard, 35 mm rail mounting optional

### Description

The D8M-U200 relay module is a form, fit and function solution to replace all kind of (mini) contactors with a maximum of 8 contacts. The module consists of an 8-pole relay, spring clamp terminal connections and a bracket with surface/wall or 35 mm rail mounting.

By applying the D8M-U200 relay module all specifications of the standard D8-U200 relay are valid. The spring clamp terminals provides 2 connection points per contact. Also latching KDN-U200 relays can be used inside the module.

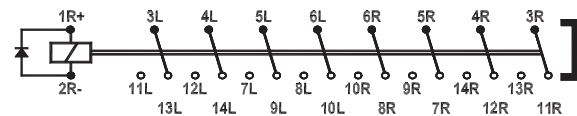
Thanks to its small dimensions the module can be fitted in most places where standard contactors are used.

### Application

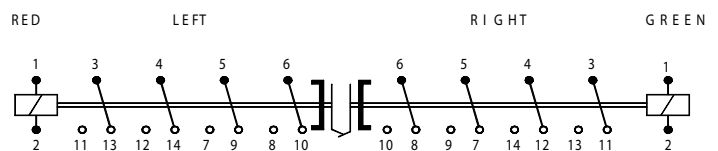
Typical applications are dusty environments where the open construction of a contactor is causing contact problems (dust is gathered between the contacts of the contactor).

### Connection diagram

Instantaneous relay



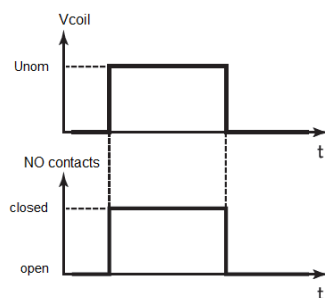
Latching relay



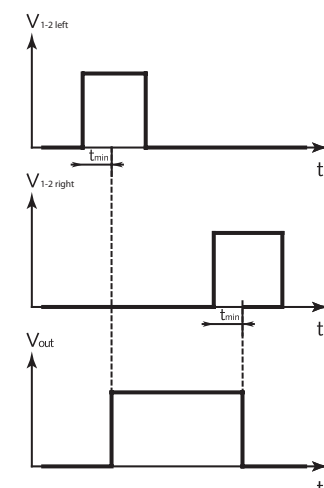
Please note the relay will leave production in open state (with open armature at the left side) with all contacts in the position shown in the connection diagram. Due to severe shocks far exceeding maximum levels mentioned in IEC 61373 (Category I, Class B, Body mounted), it can happen the left armature closes and stay closed. Therefore after installation all relays must be checked on correct state of the contacts and activate both coils 10 times alternately for correct operation.

### Timing diagrams

Instantaneous relay



Latching relay



### Railway compliancy

|           |                |
|-----------|----------------|
| EN 50155  | EN 50121       |
| IEC 60571 | EN 45545-2     |
| IEC 60077 | NF F16-101/102 |
| IEC 60947 | NF F 62-002    |
| IEC 61373 |                |



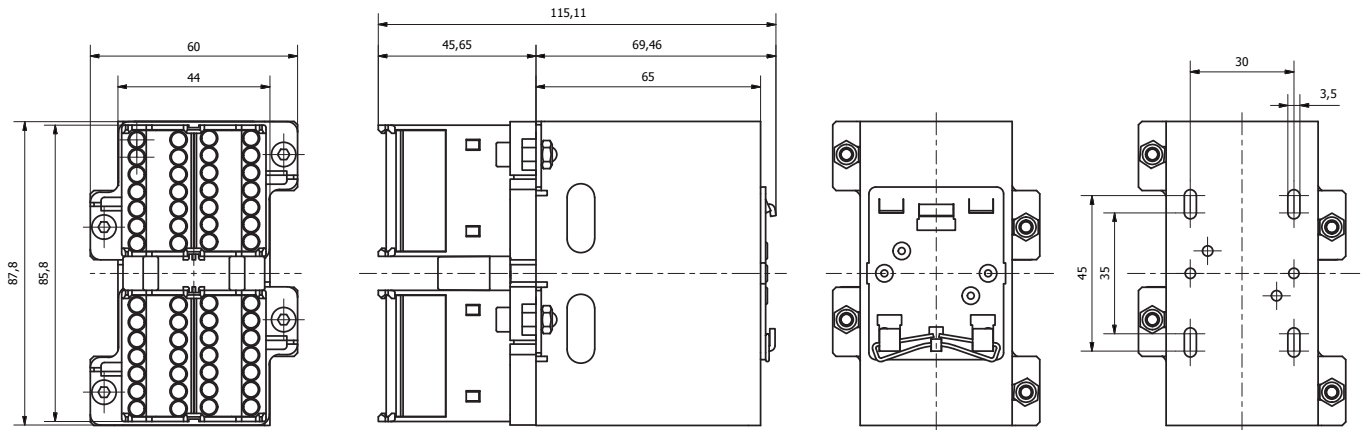
## Relay module D8M-U200

### Options

- Low temperature (-50 °C), max. contact current 8 A
- Gold plated contacts
- Extra dust protection (for relays)
- Back EMF protection diode (for latching versions)
- AgSnO<sub>2</sub> contacts, high resistant to welding
- No magnetic arc blow-out
- Polarisation diode
- Double zener diode
- Double make / double break contacts (-50 °C)
- No diode

Remark: Not all combinations possible

### Dimensions (mm)



For more detailed technical specifications, drawings and ordering information, go to the product page on [www.morssmitt.com](http://www.morssmitt.com)

 **Over 10 million Mors Smitt relays in use in rail transport applications worldwide!**

**Mors Smitt Asia Ltd.**  
Unit B & C, 25/F., Casey Aberdeen House  
38 Heung Yip Road, Wong Chuk Hang  
Hong Kong  
Tel: +852 2343 555  
[sales.msa@wabtec.com](mailto:sales.msa@wabtec.com)

**Mors Smitt France SAS**  
2 Rue de la Mandinière  
72300 Sablé-sur-Sarthe, France  
Tel: +33 (0) 243 92 82 00  
[sales.msf@wabtec.com](mailto:sales.msf@wabtec.com)

**Mors Smitt UK Ltd.**  
Graycar Business Park,  
Burton on Trent, DE13 8EN, UK  
Tel: +44 (0)1283 357 263  
[sales.msuk@wabtec.com](mailto:sales.msuk@wabtec.com)

**Wabtec Netherlands B.V.**  
Vrieslantlaan 6,  
3526 AA, Utrecht, Netherlands  
Tel: +31 (0)30 288 1311  
[sales.msbv@wabtec.com](mailto:sales.msbv@wabtec.com)

**Mors Smitt Technologies Ltd.**  
1010 Johnson Drive,  
Buffalo Grove, IL 60089-6918, USA  
Tel: +1 847 777 6497  
[salesmst@wabtec.com](mailto:salesmst@wabtec.com)

**RMS Mors Smitt**  
6 Anzed Court,  
Mulgrave, VIC 3170, Australia  
Tel: +61 (0)3 8544 1200  
[sales.rms@wabtec.com](mailto:sales.rms@wabtec.com)

(c) Copyright 2018

All rights reserved. Nothing from this edition may be multiplied, or made public in any form or manner, either electronically, mechanically, by photocopying, recording, or in any manner, without prior written consent from Mors Smitt. This also applies to accompanying drawings and diagrams. Due to a policy of continuous development Mors Smitt reserves the right to alter the equipment specification and description outlined in this datasheet without prior notice and no part of this publication shall be deemed to be part of any contract for the equipment unless specifically referred to as an inclusion within such contract. Mors Smitt does not warrant that any of the information contained herein is complete, accurate, free from potential errors, or fit for any particular purpose. Mors Smitt does not accept any responsibility arising from any party's use of the information in this document.

## Technical specifications

## Relay module D8M-U200

### Coil characteristics - instantaneous versions

|                                               |                 |
|-----------------------------------------------|-----------------|
| Operating times at nominal voltage (typical): |                 |
| Pull-in time                                  | ≤ 20 ms         |
| Release time                                  | ≤ 21 ms         |
| Inductance L/R at Unom (typical):             |                 |
| Energized                                     | 11 ms           |
| Released                                      | 8 ms            |
| Operating voltage range                       | 0.7 - 1.25 Unom |

| Type          | Unom (VDC) | Umin (VDC) | Umax (VDC) | Udrop-out (VDC) | Rcoil * (Ω) | Pnom (W) |
|---------------|------------|------------|------------|-----------------|-------------|----------|
| D8M-U201-D800 | 24         | 16.8       | 30         | 2.4             | 233         | 2.8      |
| D8M-U202-D800 | 48         | 33.6       | 60         | 4.8             | 680         | 2.8      |
| D8M-U203-D800 | 72         | 50.4       | 90         | 7.2             | 1590        | 2.8      |
| D8M-U204-D800 | 110        | 77         | 137.5      | 11.0            | 3769        | 2.8      |
| D8M-U205-D800 | 96         | 67.2       | 120        | 9.6             | 3547        | 2.8      |
| D8M-U206-D800 | 12         | 8.4        | 15         | 1.2             | 76          | 2.8      |
| D8M-U207-D800 | 36         | 25.2       | 45         | 3.6             | 680         | 2.8      |

Other types on request

\* The Rcoil is measured at room temperature and has a tolerance of ± 10%

#### Remarks:

- Umin is the must-operate voltage at which the relay has picked up in all circumstances (worst-case situation), in practice the relay picks up at a lower voltage
- Udrop-out is the must-release voltage at which the relay has dropped-out in all circumstances (worst-case situation), in practice the relay drops out at a higher voltage
- Always select the nominal voltage as close as possible to the actual voltage in the application

### Coil characteristics - latching versions

|                                               |                   |
|-----------------------------------------------|-------------------|
| Operating times at nominal voltage (typical): |                   |
| Minimum impulse time (t <sub>min</sub> )      | 50 ms             |
| Bounce time N/O contacts                      | ≤ 4 ms            |
| Bounce time N/C contacts                      | ≤ 8 ms            |
| Inductance L/R at Unom (typical):             |                   |
| Energized                                     | 11 ms             |
| Released                                      | 8 ms              |
| Operating voltage range                       | 70 % - 125 % Unom |

| Type          | Unom (VDC) | Umin (VDC) | Umax (VDC) | Udrop-out (VDC) | Rcoil * (Ω) | Pnom (W) |
|---------------|------------|------------|------------|-----------------|-------------|----------|
| D8M-U201-B800 | 24         | 16.8       | 30         | 9.6             | 178         | 3.2      |
| D8M-U202-B800 | 48         | 33.6       | 60         | 19.2            | 666         | 3.3      |
| D8M-U203-B800 | 72         | 50.4       | 90         | 28.8            | 1580        | 3.3      |
| D8M-U204-B800 | 110        | 77         | 137.5      | 44.0            | 3850        | 3.0      |
| D8M-U205-B800 | 96         | 67.2       | 120        | 38.4            | 3600        | 2.6      |
| D8M-U206-B800 | 12         | 8.4        | 15         | 4.8             | 94          | 3.3      |
| D8M-U207-B800 | 36         | 25.2       | 45         | 14.4            | 370         | 3.2      |

Other types on request

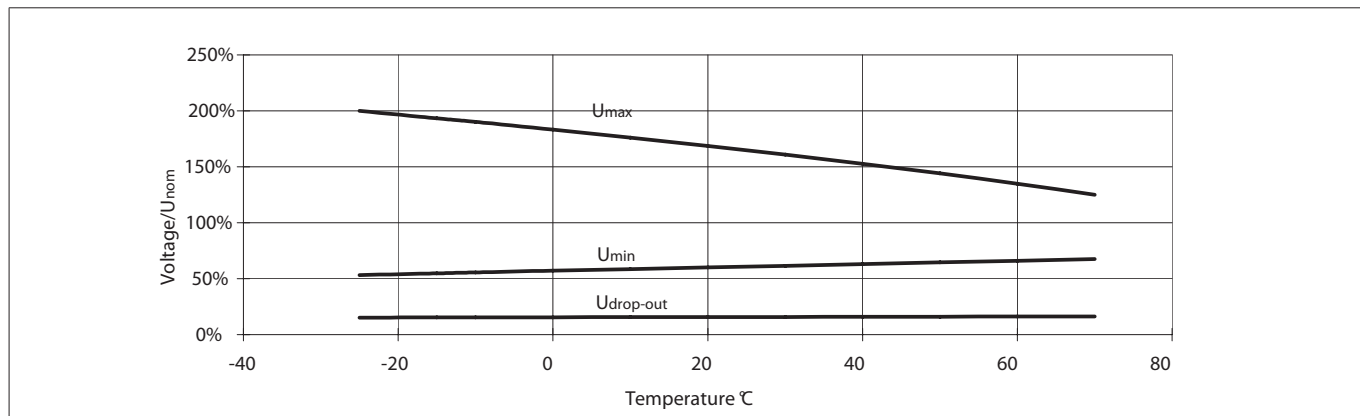
\* The Rcoil is measured at room temperature and has a tolerance of ± 10%

#### Remarks:

- Umin is the must-operate voltage at which the relay has picked up in all circumstances (worst-case situation), in practice the relay picks up at a lower voltage
- Udrop-out is the must-release voltage at which the relay has dropped-out in all circumstances (worst-case situation), in practice the relay drops out at a higher voltage
- Always select the nominal voltage as close as possible to the actual voltage in the application

## Relay module D8M-U200

### Operating range at various temperatures - instantaneous versions



### Contact characteristics

|                             |             |                                                           |
|-----------------------------|-------------|-----------------------------------------------------------|
| Amount and type of contacts |             | 8 C/O                                                     |
| Maximum make current        |             | 16 A                                                      |
| Peak inrush current         | NF F 62-002 | 200 A (withstand > 10 x 200 A @ 10 ms, 1 min)             |
| Maximum continuous current  | IEC 60947   | 10 A                                                      |
| Maximum switching voltage   |             | 250 VDC, 440 VAC                                          |
| Minimum switching voltage   |             | 12 V                                                      |
| Minimum switching current   |             | 10 mA                                                     |
| Maximum breaking capacity   |             | 110 VDC, 8 A (L/R ≤ 15 ms)<br>230 VAC, 10 A (cos φ ≥ 0.7) |
| Maximum contact resistance  |             | 15 mΩ                                                     |
| Material                    |             | Ag standard (optional AgSnO <sub>2</sub> , Au on Ag)      |
| Contact gap                 |             | 0.7 mm                                                    |
| Contact force               |             | > 200 mN                                                  |

### Electrical characteristics

|                             |               |             |                      |
|-----------------------------|---------------|-------------|----------------------|
| Dielectric strength EN50155 | Pole-pole     | IEC 60255-5 | 4 kV, 50 Hz, 1 min   |
|                             | Cont-coil     | IEC60077    | 2.5 kV, 50 Hz, 1 min |
|                             | Open contacts |             | 2.5 kV; 50 Hz; 1 min |
| Pulse withstanding          |               | IEC 60255-5 | 5 kV (1.2/50 μs)     |

## Relay module D8M-U200

### Mechanical characteristics

|                                                           |                                                                                                              |
|-----------------------------------------------------------|--------------------------------------------------------------------------------------------------------------|
| Mechanical life                                           | Instantaneous versions: 10 x 10 <sup>6</sup> operations<br>Latching versions: 2 x 10 <sup>6</sup> operations |
| Maximum switching frequency                               | Mechanical: 3600 ops/h<br>Electrical: 1200 ops/h                                                             |
| Weight:<br>Surface / wall mounting<br>35 mm rail mounting | 630 g<br>660 g                                                                                               |

|                                                       |                                    |
|-------------------------------------------------------|------------------------------------|
| Mounting                                              | Surface / wall and 35 mm rail      |
| Socket contacts<br>Wire size<br>Wire stripping length | 0.08 - 2.5 mm <sup>2</sup><br>6 mm |
| Max. torque value mounting screws                     | 1.0 Nm                             |

### Environmental characteristics

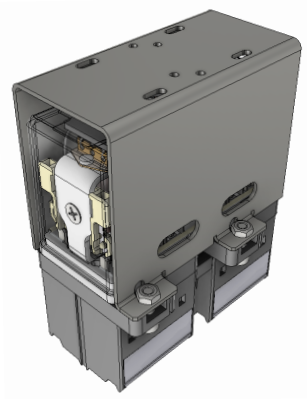
|                       |                                                                                                                                                |
|-----------------------|------------------------------------------------------------------------------------------------------------------------------------------------|
| Environmental         | EN 50125-1 and IEC 60077-1                                                                                                                     |
| Vibration             | IEC 61373, Category I, Class B, Body mounted                                                                                                   |
| Shock                 | IEC 61373, Category I, Class B, Body mounted                                                                                                   |
| Operating temperature | -25 °C...+70 °C (optional: -40/-50 °C)                                                                                                         |
| Humidity              | 95% (condensation is permitted temporarily)                                                                                                    |
| Maximum altitude      | 2000 meter. Higher altitudes are possible but have consequences mentioned in IEC 60664 (for example 5000 meter with bigger clearance distance) |
| Salt mist             | IEC 60068-2-11, class ST4                                                                                                                      |
| Damp heat             | IEC 60068-2-30, Test method Db variant 1                                                                                                       |
| Protection            | IEC 60529, IP20                                                                                                                                |
| Fire & smoke          | NF F 16-101, NF F 16-102, EN 45545-2: HL3 for requirements R22, R23, R26                                                                       |
| Insulation materials  | Cover: polycarbonate<br>Base: polyester                                                                                                        |

### Railway compliancy

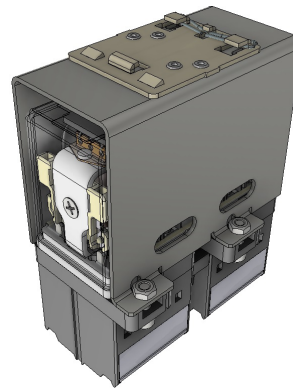
|                |                                                                                                                                  |
|----------------|----------------------------------------------------------------------------------------------------------------------------------|
| EN 50155       | Railway applications - Rolling stock - Electronic equipment                                                                      |
| IEC 60571      | Railway applications - Electronic equipment used on rolling stock                                                                |
| IEC 60077      | Railway applications - Electric equipment for rolling stock                                                                      |
| IEC 60947      | Low-voltage switchgear and controlgear                                                                                           |
| IEC 61373      | Railway applications - Rolling stock equipment - Shock and vibration tests                                                       |
| EN 50121       | Railway applications - Electromagnetic compatibility                                                                             |
| NF F16-101/102 | Railway rolling stock - Fire behavior                                                                                            |
| EN 45545-2     | Railway applications - Fire protection on railway vehicles<br>Part 2: Requirements for fire behavior of materials and components |
| NF F 62-002    | Railway rolling stock - On-off contact relays and fixed connections                                                              |
| IEC 60529      | European standard describes the protection class (IP-code)                                                                       |

Relay module  
**D8M-U200**

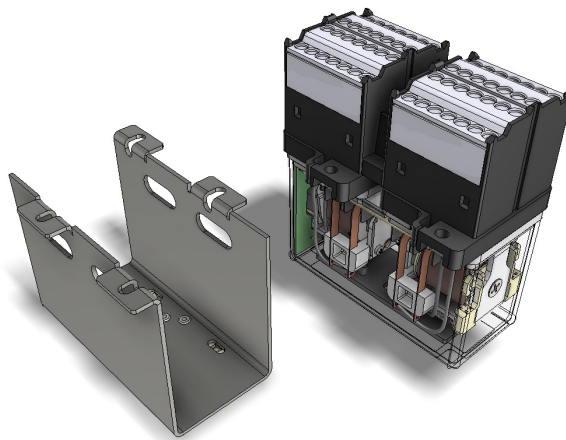
Illustrations



Module for surface/wall mounting

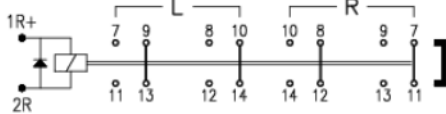
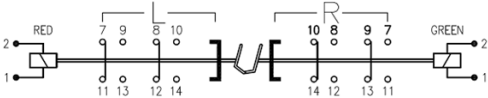


Module 35 mm rail mounting



## Relay module D8M-U200

### Options

| Code              | Description                                                         | Remark                                                                                                                                                                                                                                                               | Cannot be combined with: |
|-------------------|---------------------------------------------------------------------|----------------------------------------------------------------------------------------------------------------------------------------------------------------------------------------------------------------------------------------------------------------------|--------------------------|
| Standard options: |                                                                     |                                                                                                                                                                                                                                                                      |                          |
| C                 | Low temperature (-40 °C for latching)<br>(-50 °C for instantaneous) | Icontact < 8 A                                                                                                                                                                                                                                                       |                          |
| D                 | Back EMF protection diode (for latching versions)                   | Standard in instantaneous versions                                                                                                                                                                                                                                   |                          |
| E*                | Au; Gold plated contacts (10 µm)                                    |                                                                                                                                                                                                                                                                      | M                        |
| K                 | Extra dust protection                                               | IP50 Cat 2                                                                                                                                                                                                                                                           |                          |
| N                 | No magnetic arc blow-out                                            |                                                                                                                                                                                                                                                                      |                          |
| Q                 | Double zener diode over coil                                        | Maximum allowed peak voltage 180 V, higher voltage will damage the diode.                                                                                                                                                                                            |                          |
| Y                 | Double make/double break contacts                                   | 4 C/O DM/DB, -50 °C (instantaneous versions)<br><br>4 C/O DM/DB, -40 °C (latching versions)<br> |                          |
| R                 | 35 mm rail mounting                                                 |                                                                                                                                                                                                                                                                      |                          |
| Special options:  |                                                                     |                                                                                                                                                                                                                                                                      |                          |
| M                 | AgSnO <sub>2</sub> ; "non-weldable" contacts                        | Icontact > 100 mA                                                                                                                                                                                                                                                    | E                        |

#### \* Gold plated contacts characteristics

|                           |                                                                                                                         |
|---------------------------|-------------------------------------------------------------------------------------------------------------------------|
| Material                  | Ag, 10 µm gold plated                                                                                                   |
| Maximum switching voltage | 60 V (higher voltages may be possible, contact Mors Smitt for more information)                                         |
| Maximum switching current | 400 mA (at higher rate gold will evaporate, then the standard silver contact rating of minimum 10 mA and 12 V is valid) |
| Minimum switching voltage | 5 V                                                                                                                     |
| Minimum switching current | 1 mA                                                                                                                    |

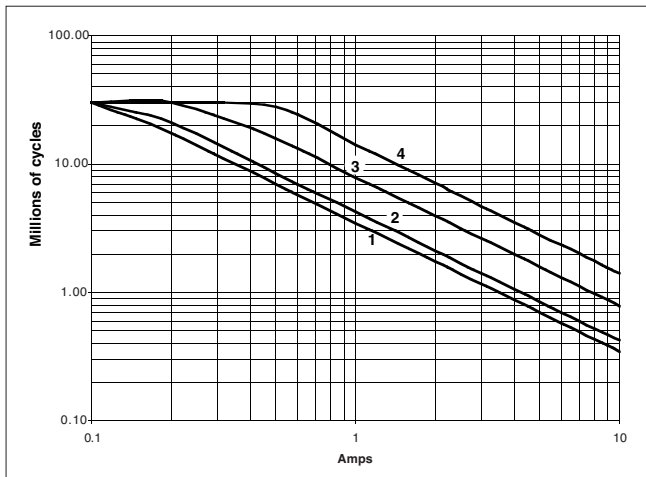
Remark: For application support or technical product support, contact your local Mors Smitt sales office (see contact details on last page).

## Relay module D8M-U200

### Electrical life expectancy

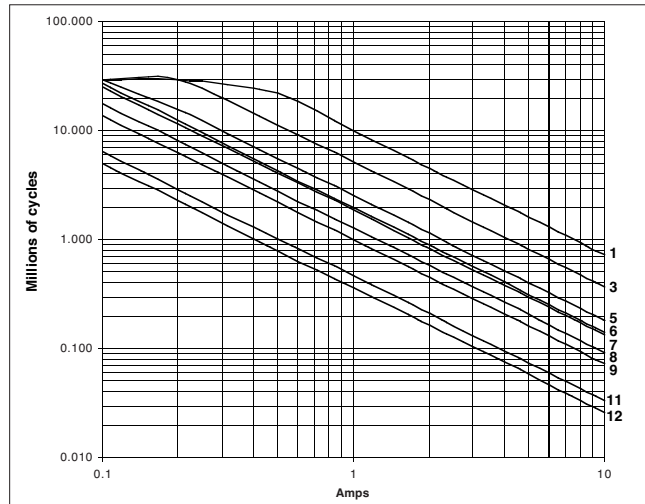
AC Current breaking capacity at  $\cos\phi = 1$

| Curve | 1   | 2   | 3  | 4  |
|-------|-----|-----|----|----|
| VAC   | 220 | 125 | 48 | 24 |



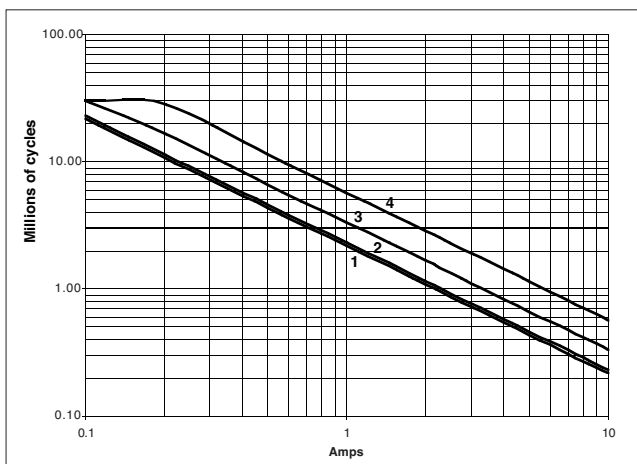
AC Current breaking capacity at  $\cos\phi = 0.7 ; 0.5 ; 0.3$

| Curve        | 1   | 3   | 5   | 6   | 7   | 8   | 9   | 11  | 12  |
|--------------|-----|-----|-----|-----|-----|-----|-----|-----|-----|
| VAC          | 24  | 24  | 125 | 220 | 24  | 125 | 220 | 125 | 220 |
| Cos $\theta$ | 0.7 | 0.5 | 0.7 | 0.7 | 0.3 | 0.5 | 0.5 | 0.3 | 0.3 |



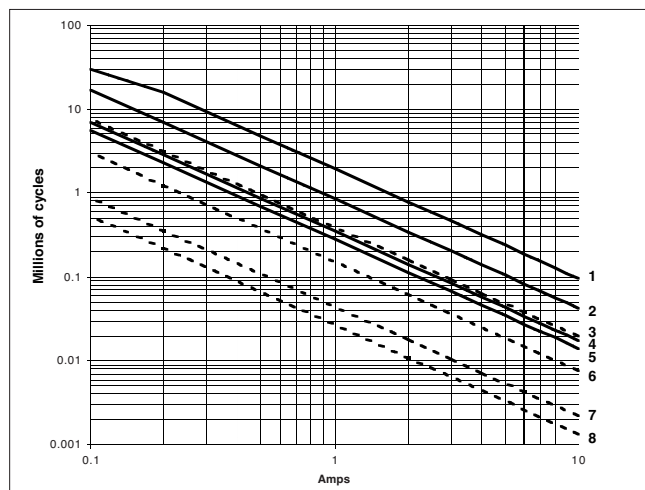
DC Current breaking capacity at  $L/R = 0$

| Curve | 1   | 2   | 3  | 4  |
|-------|-----|-----|----|----|
| VDC   | 220 | 125 | 48 | 24 |



DC Current breaking capacity  $L/R = 20 \text{ ms} ; 40 \text{ ms}$

| Curve    | 1  | 2  | 3  | 4   | 5   | 6  | 7   | 8   |
|----------|----|----|----|-----|-----|----|-----|-----|
| VDC      | 24 | 48 | 24 | 125 | 220 | 48 | 125 | 220 |
| L/R (ms) | 20 | 20 | 40 | 20  | 20  | 40 | 40  | 40  |

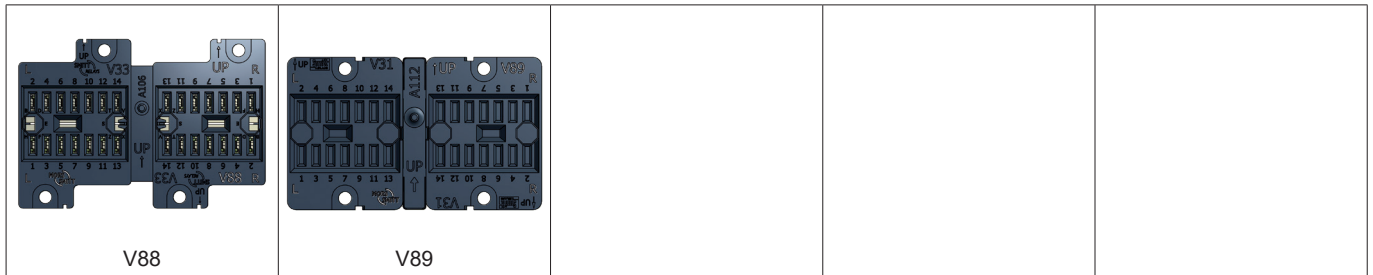


By connecting 2 contacts in series, the DC current breaking capacity is increased by 50%.



**Relay module**  
**D8M-U200**

**Mounting possibilities/sockets**



Panel/flush mounting

|           |     |                                                                               |
|-----------|-----|-------------------------------------------------------------------------------|
| 338001700 | V88 | Spring clamp socket, flush mount, rear dual connection (2.5 mm <sup>2</sup> ) |
| 338001850 | V89 | Faston connection socket, rear dual connection (4.8 x 0.8 mm)                 |

For more details see datasheets of the sockets on [www.morssmitt.com](http://www.morssmitt.com)

## Relay module D8M-U200

### Instructions for use

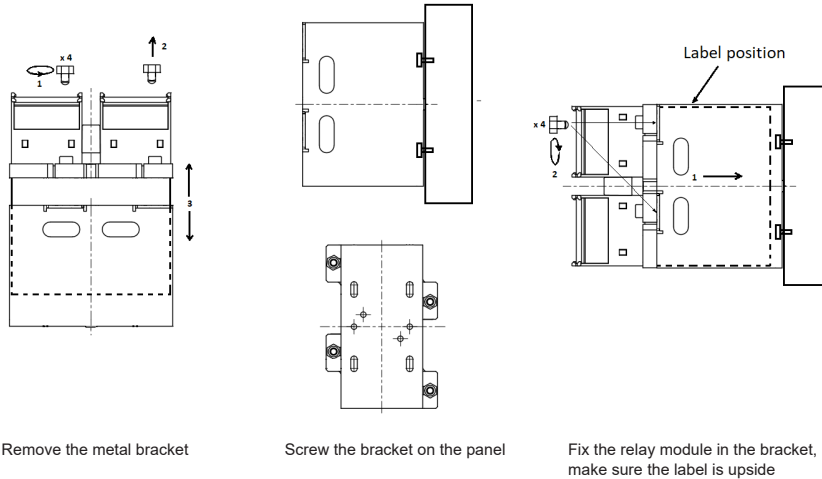
#### Installation

##### Warning!

- Before installation or working on the relay: always disconnect the power supply first!
- Never use silicon in the proximity of the relay.
- Do not use the relay in the presence of flammable gas as the arc generated from switching could cause ignition.

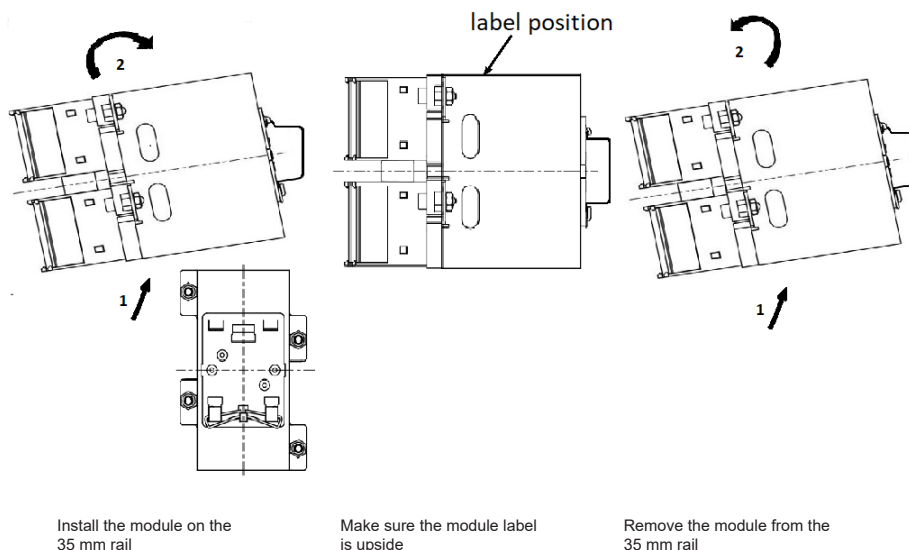
##### How to install a D8M-U200 module for panel mounting?

A relay with screw mounting bracket can be installed as shown below. Use a screwdriver (type hexagon socket (Allen key) 2.5 mm) to remove the four screws and remove the bracket. Screw the bracket on your panel via the four 5 x 10 mm slots. Screw the D8 relay module on the bracket. The stall torque of the four screws is 1Nm. The modules can be mounted tightly together to save space. After installation connect the wiring according to the terminal identification.



##### How to install a D8M-U200 module on a 35 mm rail?

Install or remove the D8M-U200 module on a 35 mm rail according the instruction as shown.

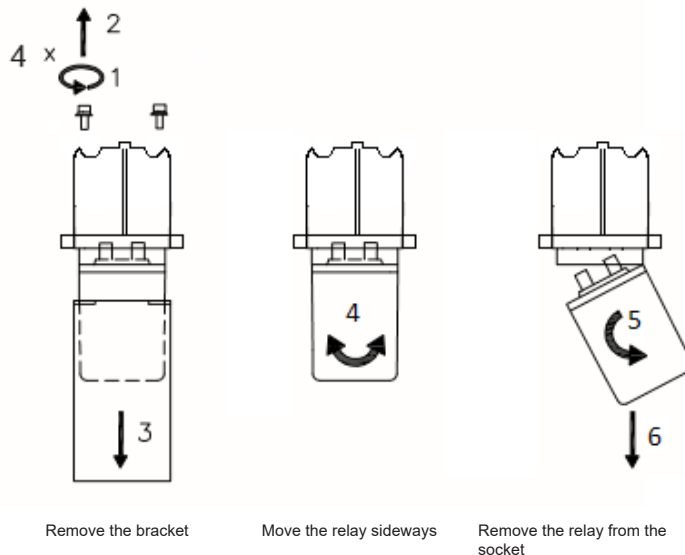


Make sure the module is installed in a vertical mounting position with the spring at bottom and label on top position as shown in detail. The modules can be mounted tightly together to save space. After installation connect the wiring according to the terminal identification.

## Relay module D8M-U200

### How to replace a relay in the D8M-U200 module?

The relay can be removed from the bracket as shown below. Use a screwdriver type hexagon (Allen key) 2.5 mm to remove the four screws and remove the bracket. Move the relay sideways as shown in the second picture. Warning: Up and down movements may cause damage to the coil wire. For installation plug the relay into the socket ensuring there is no gap between the bottom of the relay and the socket. Screw the bracket on the module with the four hexagon screws (stall torque is 1 Nm).



### Operation

After installation always apply the rated voltage to the coil to check correct operation. Long term storage may corrode the silver on the relay pins. When plugging the relay into the socket, the female bifurcated or trifurcated receivers will automatically cut through the corrosion on the pins and guarantee a reliable connection.

Before actual use of relays, it is advised to switch the load several times with the contacts. The contacts will both be electrically and mechanically cleaned due to the positive wiping action. Sometimes a contact can build up increased contact resistance ( $\leq 15 \text{ m}\Omega$  when new). When using silver contacts one can clean the contact by switching a contact load a few times using  $>24 \text{ VDC}$  &  $\sim 2 \text{ A}$ . Increased contact resistance is not always problematic, as it depends on circuit conditions. In general a contact resistance of  $1 \Omega$  is no problem, consult Mors Smitt for more information.

Condensation in the relay is possible when the coil is energised (warm) and the outside, environmental temperature is cold. This is a normal phenomenon and will not affect the function of the relay. Materials in the relay have no hygroscopic properties.

### Inspection / maintenance

Correct operation of the relay can easily be checked as the transparent cover provides good visibility of the moving contacts. If the relay does not seem to operate correctly, check for presence of the appropriate coil voltage and polarity using a suitable multimeter. If coil voltage is present, but the relay does not operate, a short circuit of the suppression diode is possible (This may have been reversed due to the coil connection).

Relays can easily be tested with the Mors Smitt Relay Tester. More information on: [www.morssmitt.com](http://www.morssmitt.com).

If the relay doesn't work after inspection, replace the relay unit with a similar model. Do not attempt to open the relay cover or try to repair. Contacts are calibrated and in balance, touching can affect proper operation. Also resoldering may affect correct operation. Since 2009 relays have tamper proof seals fitted and once broken, warranty is void.

Most relay defects are caused by installation faults such as overvoltage, spikes/transients, high/short current far exceeding the relay specifications. When returning the relays for investigation, please provide all information on the RMA form. Send defective relays back to the manufacturer for repair or replacement. Normal wear and tear or external causes are excluded from warranty.

RMA procedure see [www.morssmitt.com](http://www.morssmitt.com)

## Relay module D8M-U200

### Ordering scheme

| D8M-U2                                          |           |             | -           |          | - |            | - |                                                          |
|-------------------------------------------------|-----------|-------------|-------------|----------|---|------------|---|----------------------------------------------------------|
| Coil voltages                                   | <b>01</b> |             |             |          |   |            |   | 24 VDC                                                   |
|                                                 | <b>02</b> |             |             |          |   |            |   | 48 VDC                                                   |
|                                                 | <b>03</b> |             |             |          |   |            |   | 72 VDC                                                   |
|                                                 | <b>04</b> |             |             |          |   |            |   | 110 VDC                                                  |
|                                                 | <b>05</b> |             |             |          |   |            |   | 96 VDC                                                   |
|                                                 | <b>06</b> |             |             |          |   |            |   | 12 VDC                                                   |
|                                                 | <b>07</b> |             |             |          |   |            |   | 36 VDC                                                   |
| Contact data                                    |           | <b>B800</b> |             |          |   |            |   | Latching (bistable) - 8 C/O contacts                     |
|                                                 |           |             | <b>D800</b> |          |   |            |   | Instantaneous - 8 C/O contacts                           |
| Options<br>(add as many options as needed)      |           |             | <b>C</b>    |          |   |            |   | Low temperature - Max contact current 8 A                |
|                                                 |           |             |             | <b>D</b> |   |            |   | Back EMF protection diode (for latching versions)        |
|                                                 |           |             |             | <b>E</b> |   |            |   | Gold plated contacts                                     |
|                                                 |           |             |             | <b>K</b> |   |            |   | Extra dust protection, IP50 (relay only)                 |
|                                                 |           |             |             | <b>N</b> |   |            |   | No magnetic arc blow-out                                 |
|                                                 |           |             |             | <b>Q</b> |   |            |   | Double zener diode                                       |
|                                                 |           |             |             | <b>R</b> |   |            |   | 35 mm rail mounting                                      |
| Special options<br>(minimum order quantity: 20) |           |             |             | <b>M</b> |   |            |   | AgSnO <sub>2</sub> contacts, highly resistant to welding |
|                                                 |           |             |             |          |   |            |   | E                                                        |
| Connection                                      |           |             |             |          |   | <b>V88</b> |   | Spring clamp connection (standard)                       |
|                                                 |           |             |             |          |   | <b>V89</b> |   | Faston connection                                        |

Example: D8M-U201-B800-DE-V88

Description: Latching relay, 8 contacts, Unom: 24 VDC, back EMF protection diode, gold plated contacts, spring clamp connection

Example: D8M-U204-D800-M-V89

Description: Instantaneous relay, 8 contacts, Unom: 110 VDC, AgSnO<sub>2</sub> contacts, Faston connection

**Relay module**  
**D8M-U200**

---

 **Over 10 million Mors Smitt relays in use in rail transport applications worldwide!**

**Mors Smitt Asia Ltd.**  
Unit B & C, 25/F., Casey Aberdeen House  
38 Heung Yip Road, Wong Chuk Hang  
Hong Kong  
Tel: +852 2343 555  
sales.msa@wabtec.com

**Mors Smitt France SAS**  
2 Rue de la Mandinière  
72300 Sablé-sur-Sarthe, France  
Tel: +33 (0) 243 92 82 00  
sales.msf@wabtec.com

**Mors Smitt UK Ltd.**  
Graycar Business Park,  
Burton on Trent, DE13 8EN, UK  
Tel: +44 (0)1283 357 263  
sales.msuk@wabtec.com

**Wabtec Netherlands B.V.**  
Vrieslantlaan 6,  
3526 AA, Utrecht, Netherlands  
Tel: +31 (0)30 288 1311  
sales.msbv@wabtec.com

**Mors Smitt Technologies Ltd.**  
1010 Johnson Drive,  
Buffalo Grove, IL 60089-6918, USA  
Tel: +1 847 777 6497  
salesmst@wabtec.com

**RMS Mors Smitt**  
6 Anzed Court,  
Mulgrave, VIC 3170, Australia  
Tel: +61 (0)3 8544 1200  
sales.rms@wabtec.com

(c) Copyright 2018

All rights reserved. Nothing from this edition may be multiplied, or made public in any form or manner, either electronically, mechanically, by photocopying, recording, or in any manner, without prior written consent from Mors Smitt. This also applies to accompanying drawings and diagrams. Due to a policy of continuous development Mors Smitt reserves the right to alter the equipment specification and description outlined in this datasheet without prior notice and no part of this publication shall be deemed to be part of any contract for the equipment unless specifically referred to as an inclusion within such contract. Mors Smitt does not warrant that any of the information contained herein is complete, accurate, free from potential errors, or fit for any particular purpose. Mors Smitt does not accept any responsibility arising from any party's use of the information in this document.

