

EA 103 - Socket

Datasheet



Description

The EA 103 socket has M3 screw 6.5 mm ring terminal to allow front connection on the socket.

The EA 103 AF or BF socket is equipped with wire locking spring mechanism. Hexagonal plastic keys and round plastic plugs are provided for relay type coding, but not inserted. Keying can be provided as an option with matching relay keying.

The EA 103 AF socket is suitable for all A type relays and modules.
The EA 103 BF socket is suitable for all B type relays and modules.

Application

The EA 103 socket is designed for surface mount of relays and modules with screw terminals connection and provide optional 35 mm rail mount accessory.

Features

- Front connection, with screw terminals
- No internal soldering / connections
- For surface or optional 35 mm rail mount
- Wire locking spring
- EA 103 AF suitable for all A series relays and modules (A 400, AK, AM, AG, TALOR, TAC)
- EA 103 BF suitable for all B series relays (B 400, BK, BM, BG, TBBU)
- -40 °C...+80 °C operating temperature

Benefits

- Proven reliable
- Long life cycle
- Easy to maintain and replace
- Low life cycle cost
- No maintenance

Railway compliancy

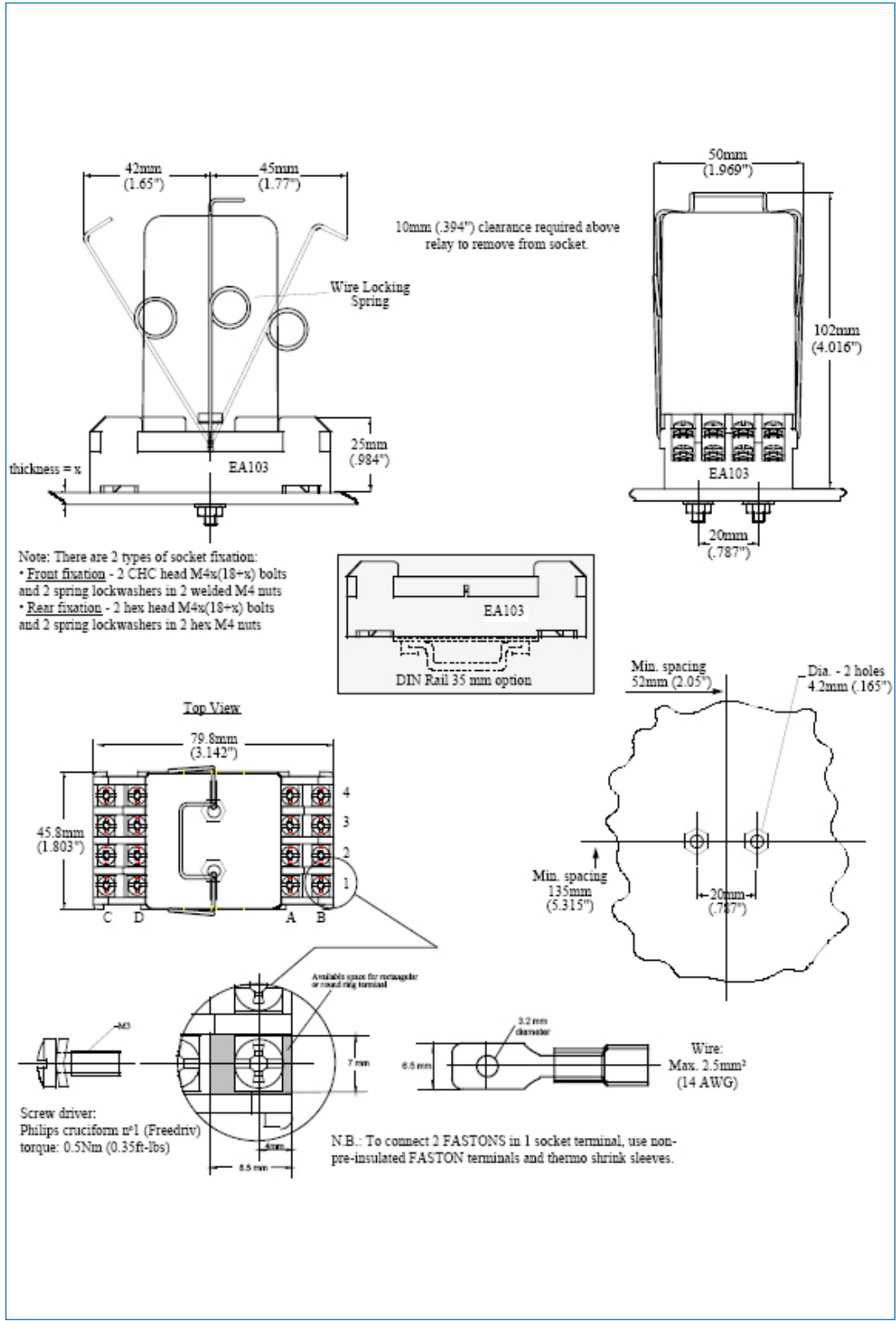
- NF F 62-002 Rolling stock - Instantaneous relay contacts and sockets
- NF F 16-101/102 Fire behaviour - Railway rolling stock



EA 103 socket

Technical specifications

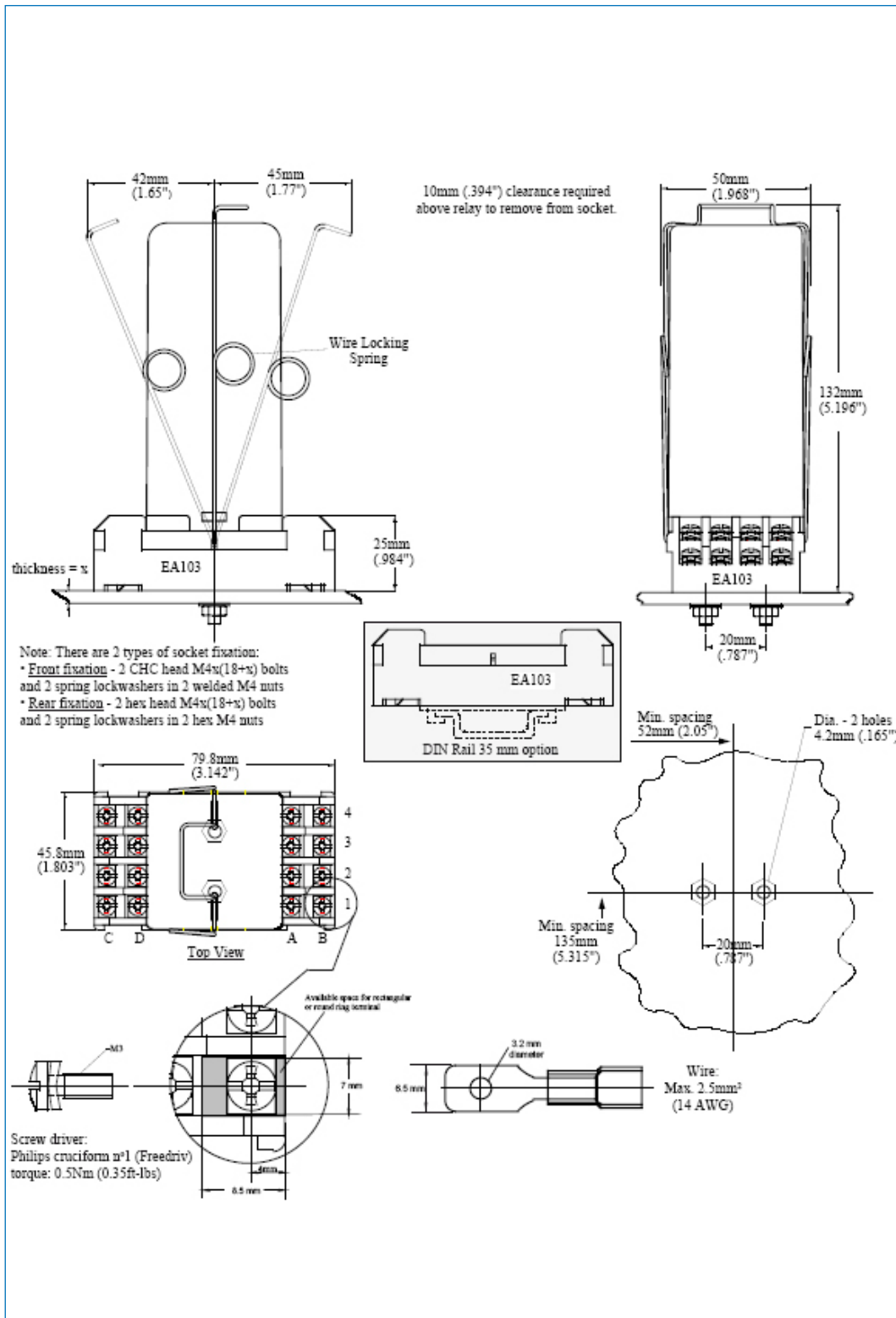
Dimensions (mm) EA 103 AF



EA 103 socket

Technical specifications

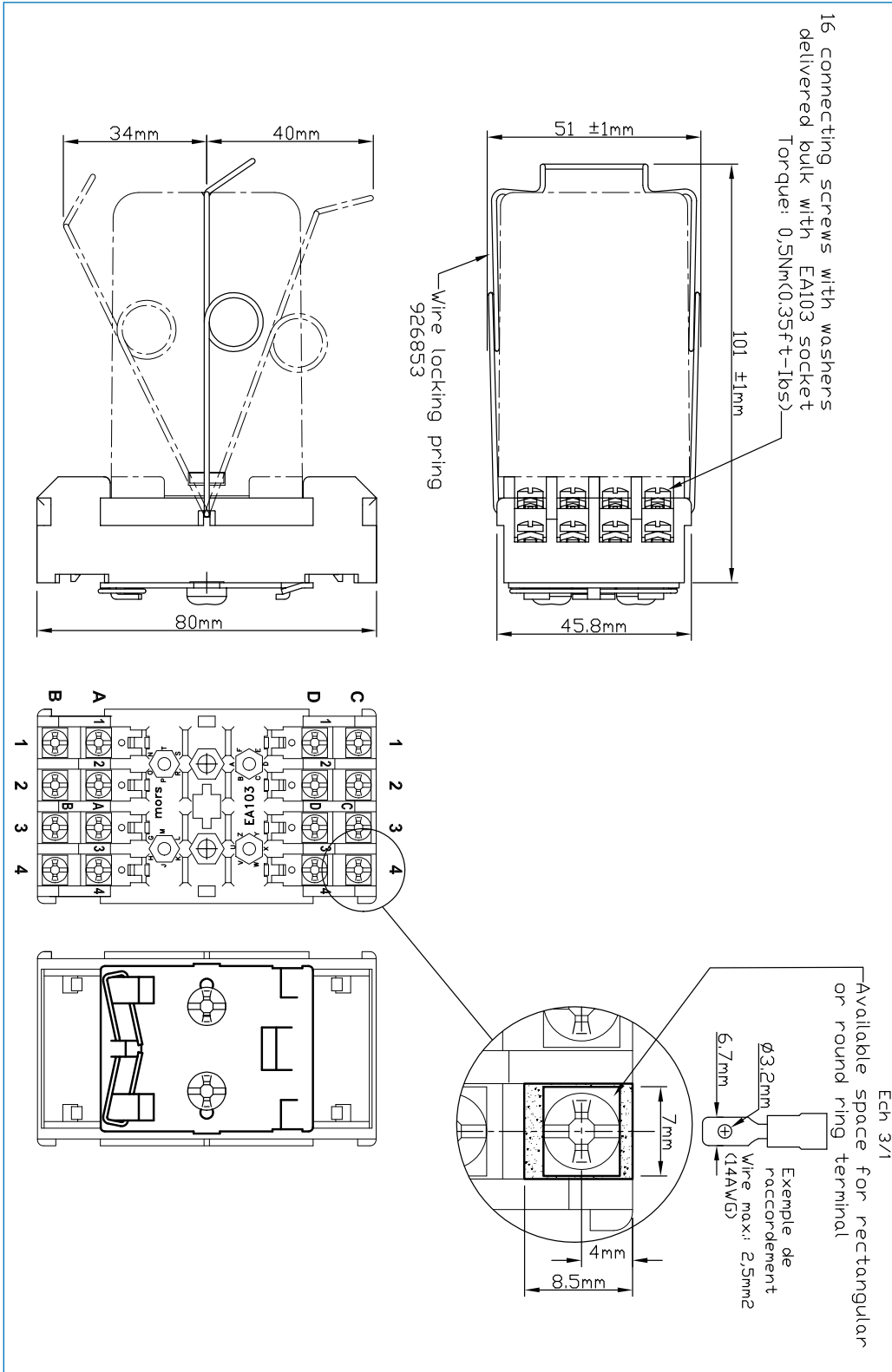
Dimensions (mm) EA 103 BF



EA 103 socket

Technical specifications

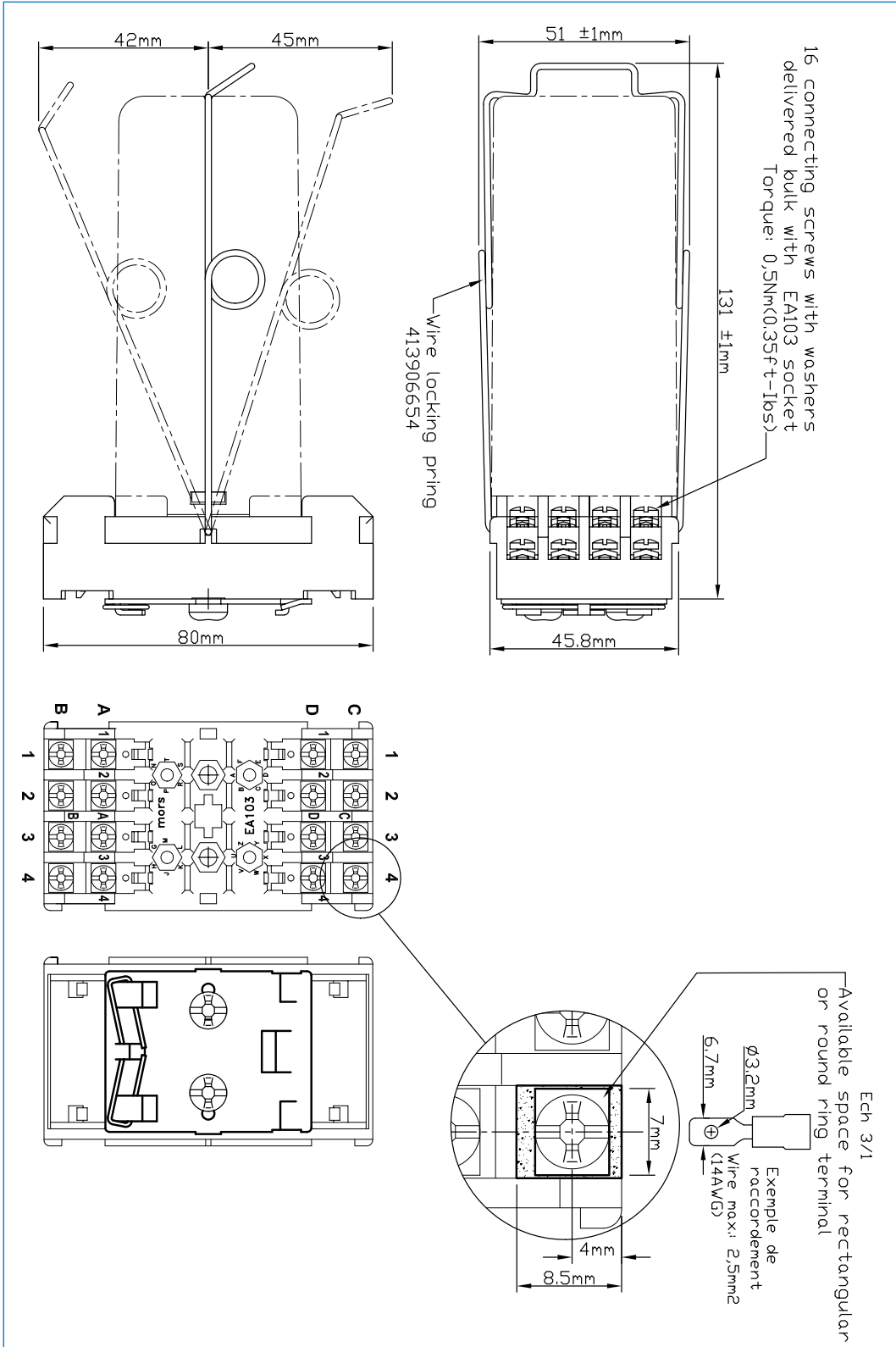
Dimensions (mm) EA 103 AFD



EA 103 socket

Technical specifications

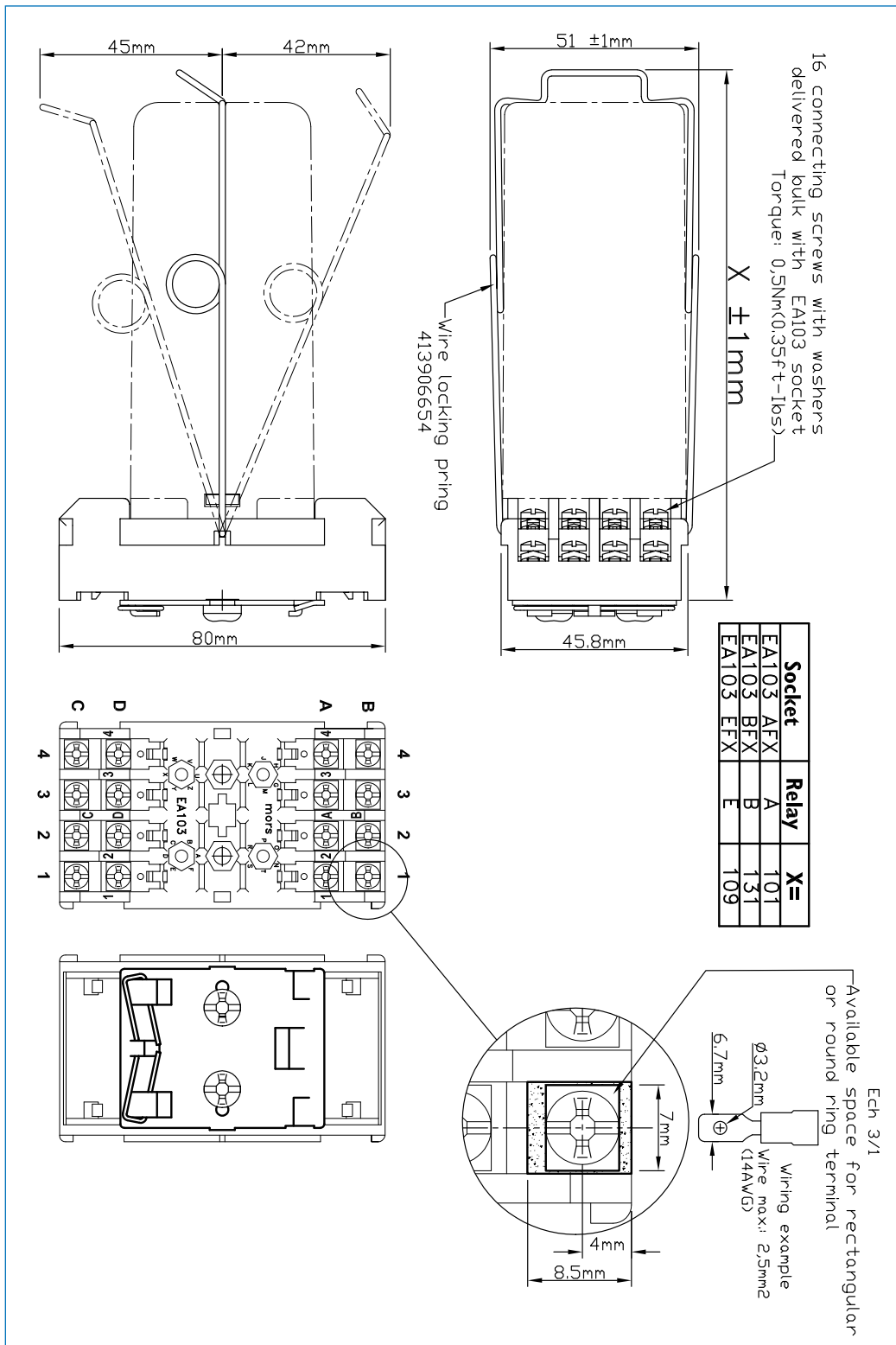
Dimensions (mm) EA 103 BFD



EA 103 socket

Technical specifications

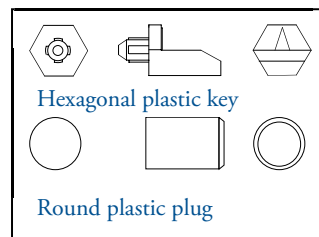
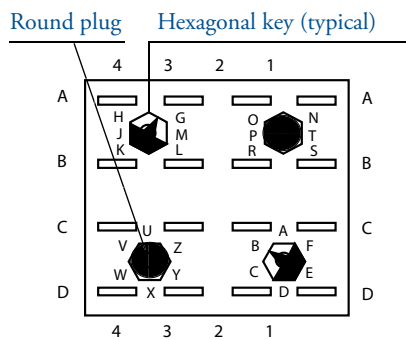
Dimensions (mm) EA 103 (A,B) F X



EA 103 socket Keying

Keying explanation

Socket (top view) keyed for BG (72 VDC)



·empty molded re-cesses are filled up by pressing 2 round plastic plugs)

Keying of relay to socket is accomplished by pressing 2 hexagonal keys and 2 round plugs into molded-in recesses on the socket. Relay keying is done in factory.

Insert keys that arrows point to the correct keying letters on socket - see example shown. Faston socket EA 104 shown.


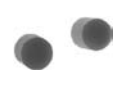



Screw type socket EA 103, front single faston EA 105 and double Faston EA 102 are keyed similarly.



EA 103 socket

Spare parts

Spare parts & part numbers

| | | | |
|------------------------------------------------------------------------------------|------------------------------------------------------------------------------------|-------------------------------------------------------------------------------------|-------------------------------------------------------------------------------------|
|  |  |  |  |
| 926853 | 431906654 | 414928005 | 414905678 |
|  |  |  | |
| C927210 | P928060 | P928061 | |

Parts only for sockets

| | |
|-----------|---------------------------|
| 926853 | Wire locking spring for A |
| 431906654 | Wire locking spring for B |
| 414928005 | Round plastic plugs |
| C927210 | Screw for connection |
| P928060 | Metal strap (2) |
| P928061 | Metal strap (4) |

Parts for relays and sockets

| | |
|-----------|------------------------|
| 414905678 | Hexagonal plastic keys |
|-----------|------------------------|



EA 103 socket

Ordering scheme



1. Socket model 2. Connection type 3. Keying (optional) 4. Relay cover 5. Locking mechanism 6. Socket Mounting

This example represents a **EA 103 BG AF**

Description: EA 103 BG AF socket for A 400 relay, U_{nom} : 72 VDC, keying BG, with wire locking spring for surface mounting

1. Socket model

EA

2. Connection type

103 Front with screw terminals

3. Keying (optional)

Refer to relay keying example A 400 72 BG
BG 72 VDC

4. Relay cover

A A type relays and modules
B B type relays and modules
E E type relays and modules

5. Locking mechanism

F Wire locking spring

6. Socket mounting

- Surface mount
D 35 mm rail mount
 (relay mobile armature down in horizontal
 mounting, standard version since 2004)
X 35 mm rail mount
 (relay mobile armature up in horizontal
 mounting, version before 2004)





Mors Smitt France SAS

Tour Rosny 2, Avenue du Général de Gaulle,
F - 93118 Rosny-sous-Bois Cedex, FRANCE
T +33 (0)1 4812 1440, F +33 (0)1 4855 9001
E sales@msrelais.com

Mors Smitt Asia Ltd.

807, Billion Trade Centre, 31 Hung To Road
Kwun Tong, Kowloon, HONG KONG SAR
T +852 2343 5555, F +852 2343 6555
E info@morssmitt.hk

Mors Smitt B.V.

Vrieslantlaan 6, 3526 AA Utrecht,
NETHERLANDS
T +31 (0)30 288 1311, F +31 (0)30 289 8816
E sales@nieaf-smitt.nl

Mors Smitt Technologies Inc.

420 Sackett Point Road
North Haven, CT 06473, USA
T +1 (203) 287 8858, F +1 (888) 287 8852
E mstechnologies@msrelais.com

Mors Smitt UK Ltd.

Doulton Road, Cradley Heath
West Midlands, B64 5QB, UK
T +44 (0)1384 567 755, F +44 (0)1384 567 710
E info@morssmitt.co.uk